

Humane Mouse Trap

by

Christopher Topalian

Copyright 2020

All Rights Reserved

Table of Contents

<i>Mouse Trap</i>	3
Mouse Trap Activated.....	4
Elastic Band Through Bottle Cap.....	5
Bottom Bottle.....	6
Paperclip Helps to Guide the Elastic.....	7
Pull the Elastic through the Bottle Opening.....	8
Paperclip to Pull the Elastic Through the Cap.....	9
Duct Tape the Elastic Band to Hold it in Place.....	10
Setting the Trap.....	11
Food - Peanut Butter is Placed in the Very End.....	12
Mouse Trap ACTIVATED = MOUSE IN THE BOTTLE!.....	13
VERY IMPORTANT NOTE:.....	15

VERY STRONG and HUMANE MOUSE TRAP

DO NOT RE-USE THE MOUSE TRAP AFTER IT HAS HAD A MOUSE IN IT!

WHEN YOU TRAP A MOUSE:

If you decide to release the mouse: BE VERY CAREFUL!

BE CAREFUL THAT YOU DO NOT SNAP THE TRAP CLOSED

WHILE OPENING IT TO RELEASE THE MOUSE!

**YOU MIGHT EJECT MOUSE FLUID INTO THE AIR IF THE MOUSE TRAP
SLAMS SHUT AGAIN!**

REMEMBER, MICE LEAVE DROPPINGS AND FLUID IN THE BOTTLE!

BE VERY CAREFUL!

DO NOT GET THOSE CONTAMINANTS ON YOU!

Mouse Trap



Materials:

- Two Recycled Water Bottles
- One Large Elastic Band
- Two Pieces of Duct Tape

Advantages:

- Contains the Fleas and keeps them from Escaping from the bottle!
- Cost about 5 cents to make. Made mostly from recycled goods.
- Requires only one store bought item: Elastic Band, large.
- Can set trigger to be as sensitive as you want.
- Very quick trapping action.
- Very strong trap.

Mouse Trap Activated



Two modes

Catch and Release

Humane Kill

Catch and Release

You can add many air holes and then very easily release the mice after you catch them by opening the bottles apart.

Humane Kill

The bottles connect very securely and tightly. So much so, that it is almost an airtight seal. If you place Tape over the bottle cap it will likely cause the mouse to go to sleep and then not wake up, from lack of oxygen.

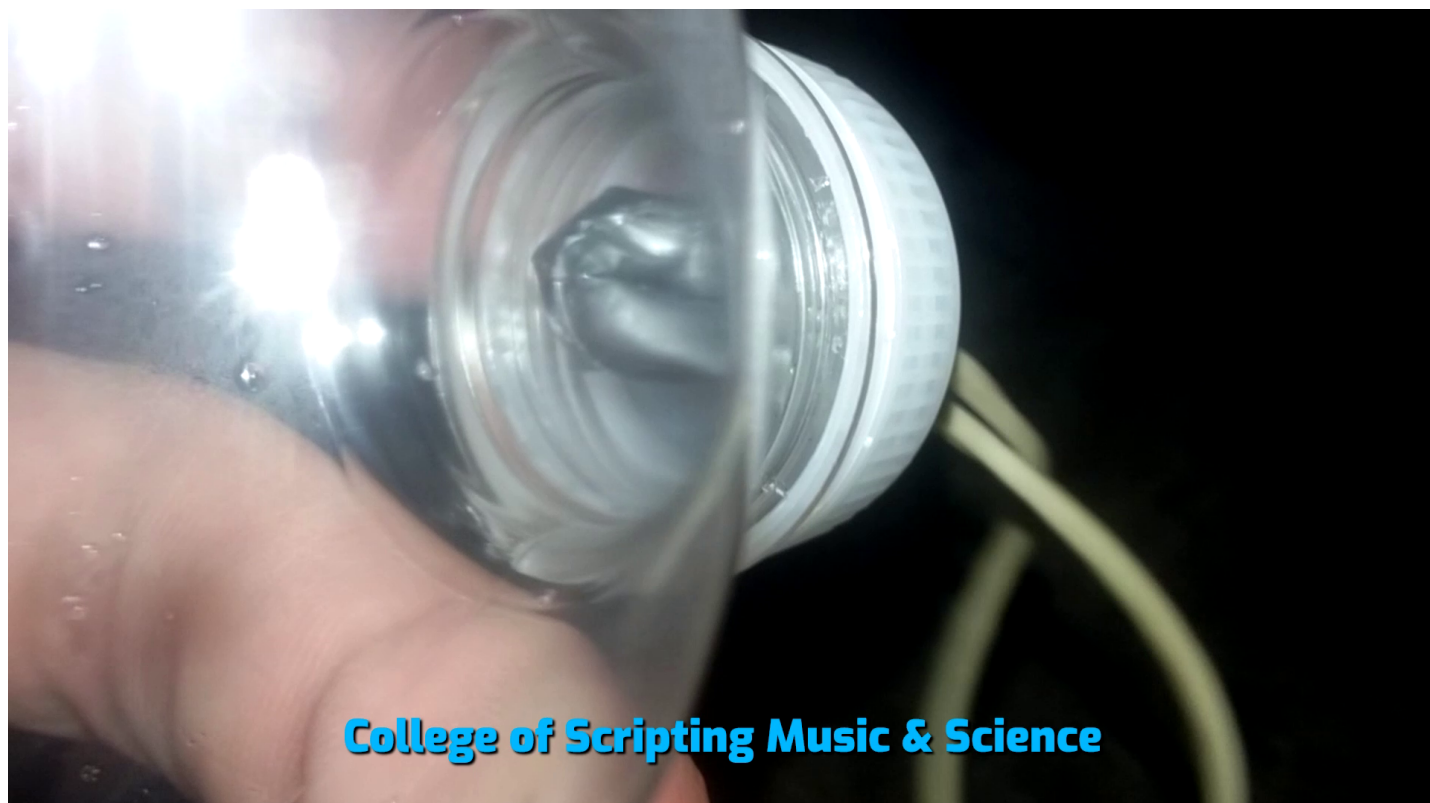
Elastic Band Through Bottle Cap



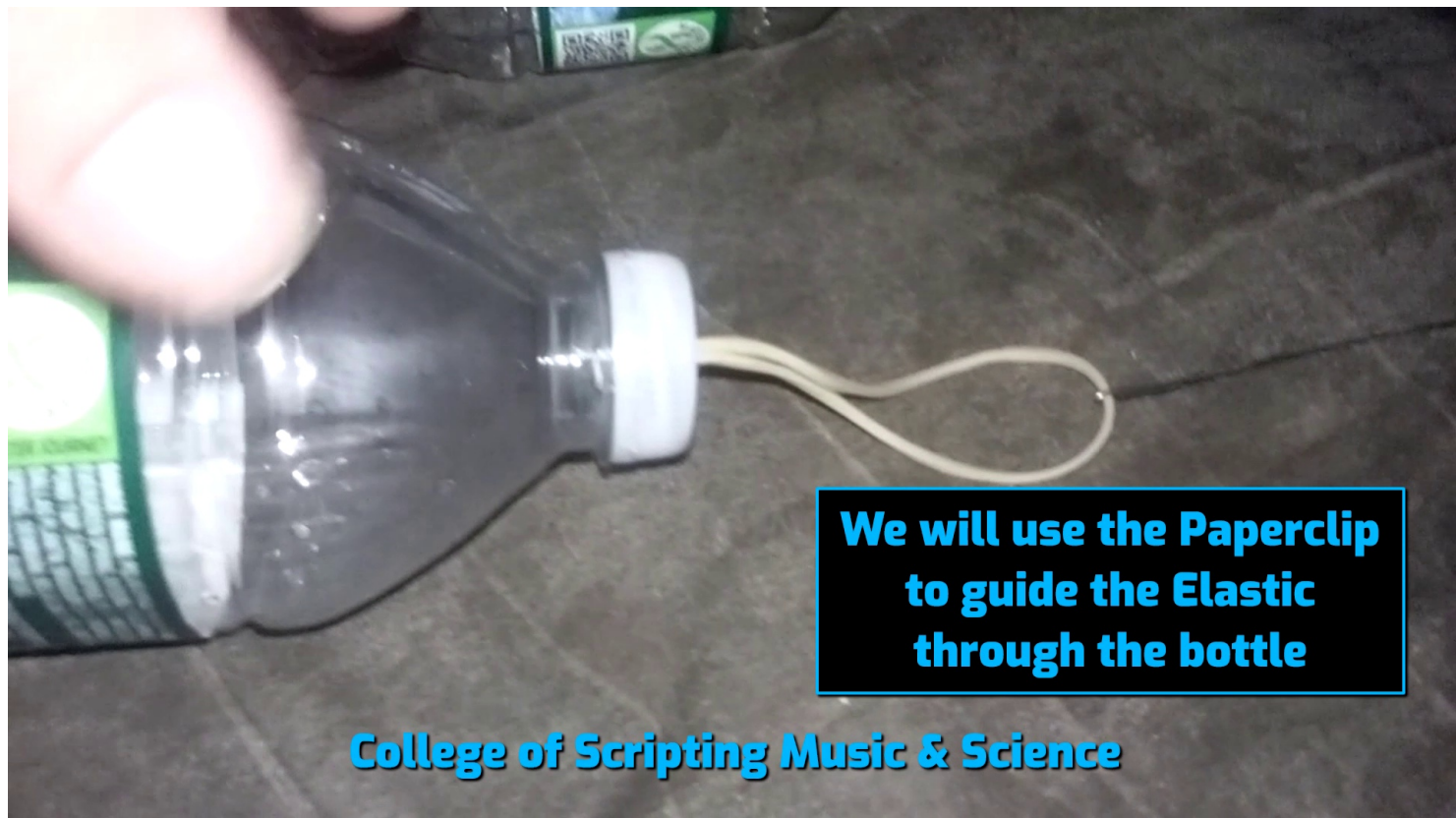
Bottom Bottle



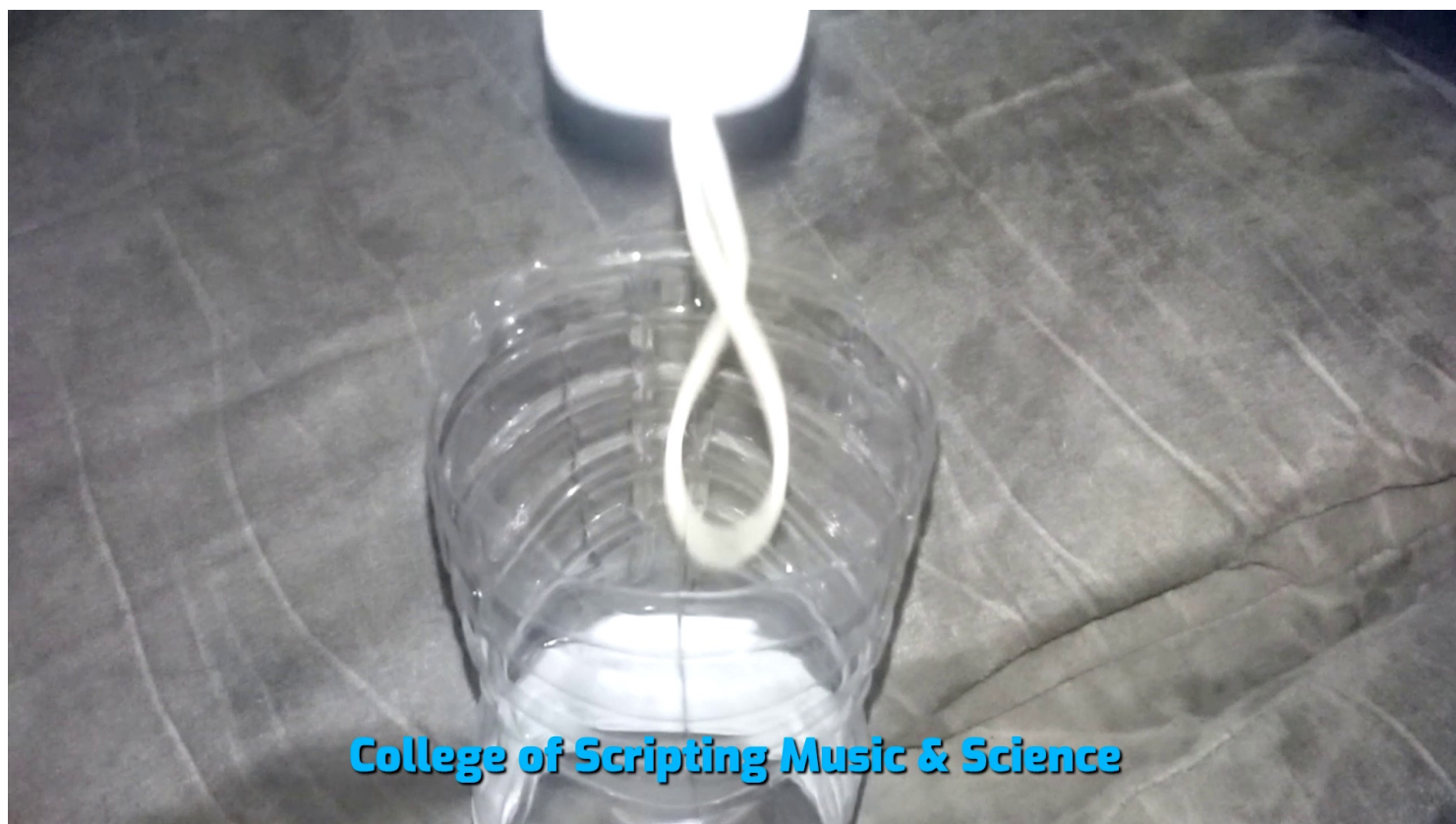
Inner View of the Duct Tape used as a Nut to Hold the Elastic in Place



Paperclip Helps to Guide the Elastic



Guiding the Elastic into the cut bottom opening of the Water bottle



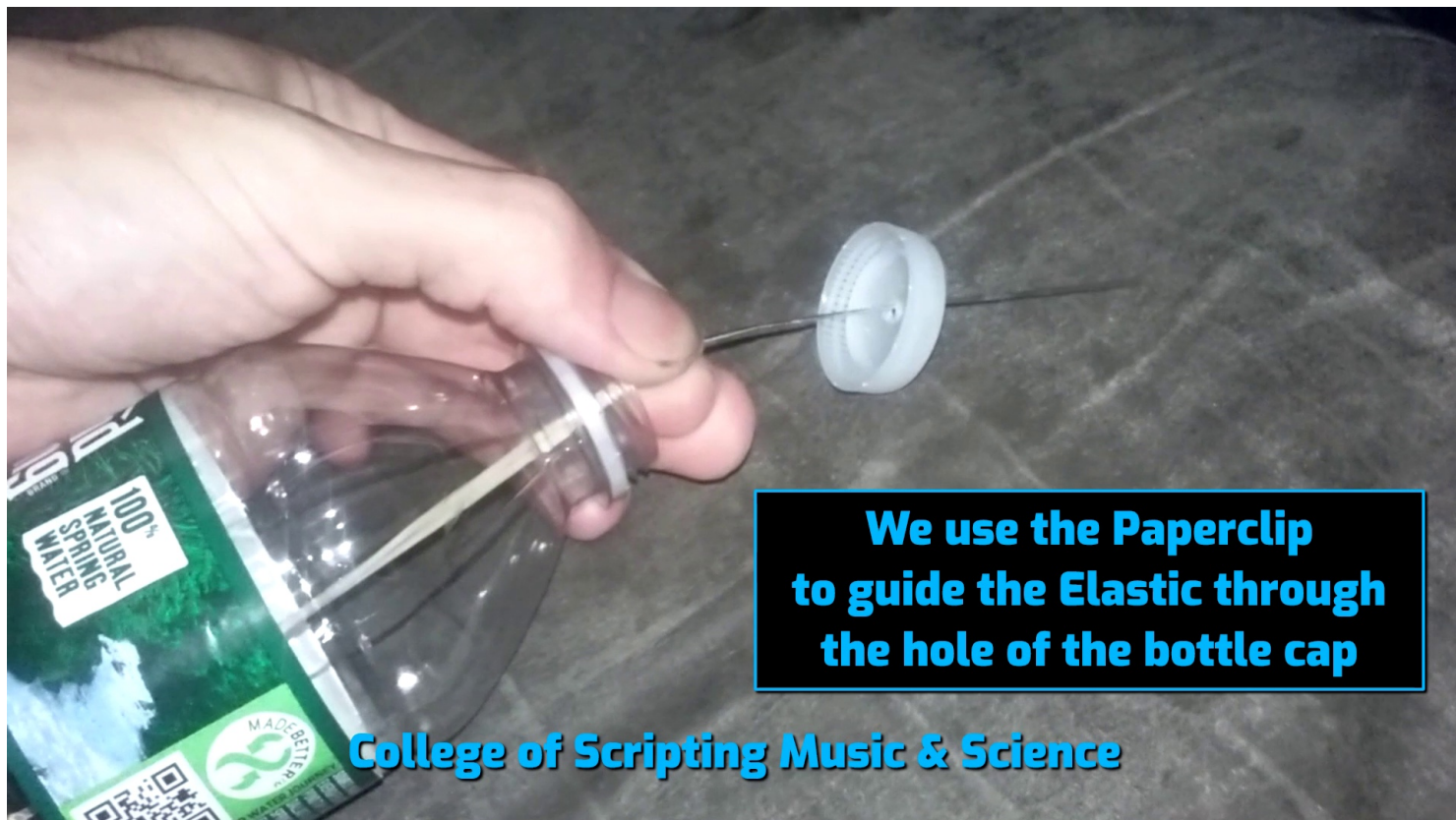
Pull the Elastic through the Bottle Opening



We use a Large Elastic and it is a good amount of tension as we pull it through



Paperclip to Pull the Elastic Through the Cap



Duct Tape the Elastic Band to Hold it in Place



**Duct Tape
around the
Elastic
multiple times
to prevent it
from being
pulled through
the hole of the
bottle cap**

College of Scripting Music & Science

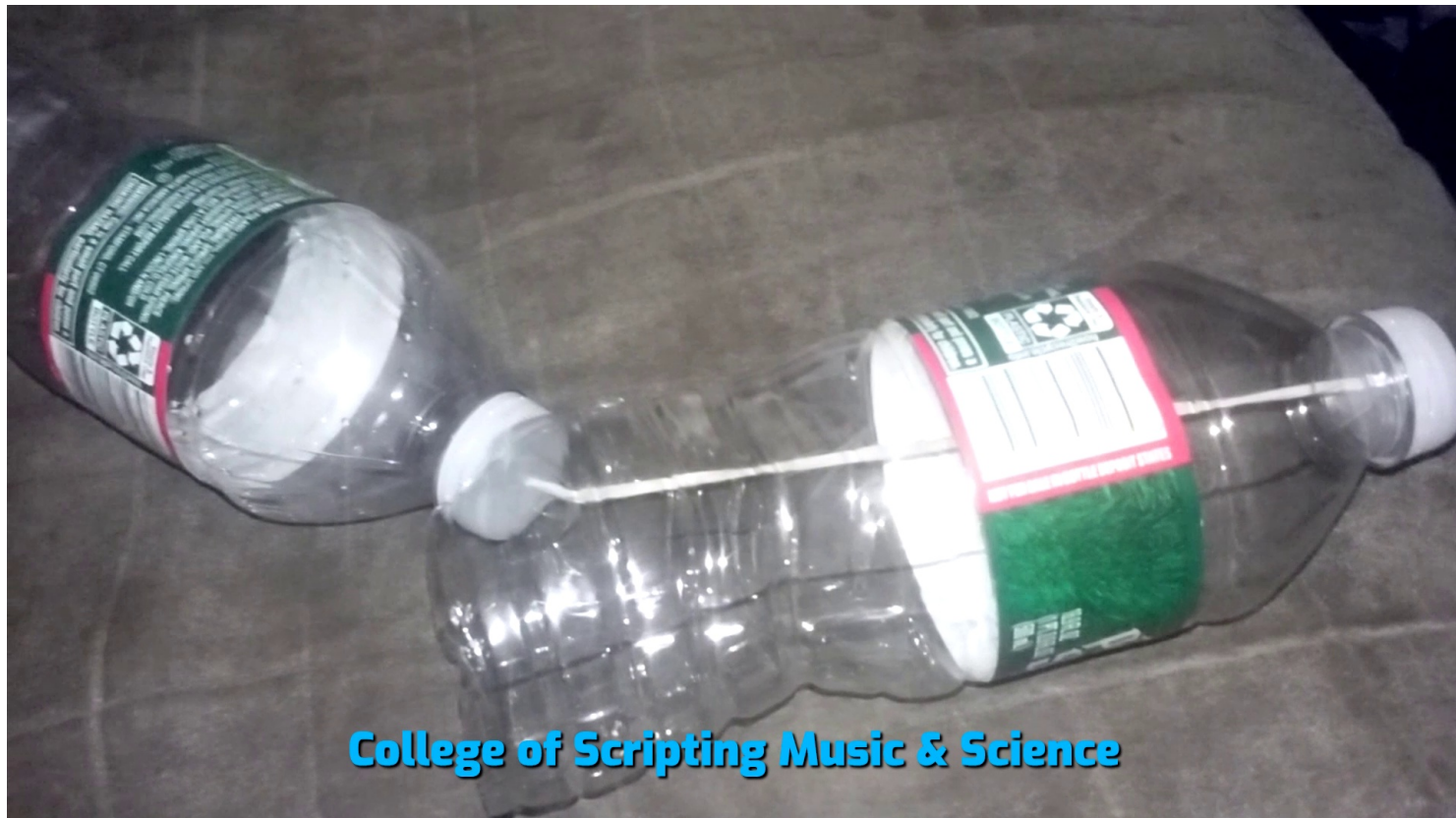


College of Scripting Music & Science

Setting the Trap



Food - Peanut Butter is Placed in the Very End



College of Scripting Music & Science

AVOID GETTING PEANUT BUTTER ON THE ELASTIC BAND!



College of Scripting Music & Science

Mouse Trap ACTIVATED = MOUSE IN THE BOTTLE!



MOUSE TRAP WORKS and IS VERY HUMANE!

Remember to Wear Eye Protection!

Remember to Wear Gloves!

Remember to Wear long clothing!

Do NOT touch the mice!

Mice spread disease, so do NOT touch the bottle or reuse the bottle.

Remember, that mice fleas are very dangerous!

Mice also infect birds at bird feeders, who then spread those pathogens hundreds and hundreds of miles away! The bird seed is being infected by the mice! Bird feeders have become pathogen propagation stations!

Dedicated to God the Father

This book is presented by the
College of Scripting Music & Science.

Please remember to wear safety equipment, when you are
working on projects!

Eye protection is extremely important, when you are constructing
something with a rubber band.

Remember to NEVER handle a Bottle with your barehands
AFTER a mouse has contacted the bottle in any way.

Mice leave droppings on and around the bottle, so please be very
careful. Do NOT contact the mouse pathogens in any way!

DO NOT RE-USE THE MOUSE TRAP AFTER IT HAS HAD A MOUSE IN IT!

VERY IMPORTANT NOTE:

The Elastic Band might get EATEN by the MOUSE, so try to avoid putting peanut butter on top of the Elastic!

If you found that you have mice actually eating the elastic, then you could cover the elastic with a single layer of duct tape that is lightly applied.

If the mouse were to eat the Elastic, then the trap would be open!

It is NOT likely for the mouse to eat the rubber band, if there is no bait on the elastic band, but even so, it is good to be aware that in life all things are possible, so do note the probabilities in all systems that you are creating.

If you are disposing of the mouse, make sure that you duct tape the two bottles together. Because, as noted above, the mouse might chew through the Elastic Band and would therefore then be free from the trap!

If you don't have a large elastic band, **you can duct tape two smaller elastic bands together** and form a chain of elastic bands. Thus, you can use ANY bottle size in the world as long as you have enough elastic bands to chain together.

REMEMBER TO WEAR EYE PROTECTION!

REMEMBER TO WEAR ALL OF THE PROPER SAFETY GEAR!